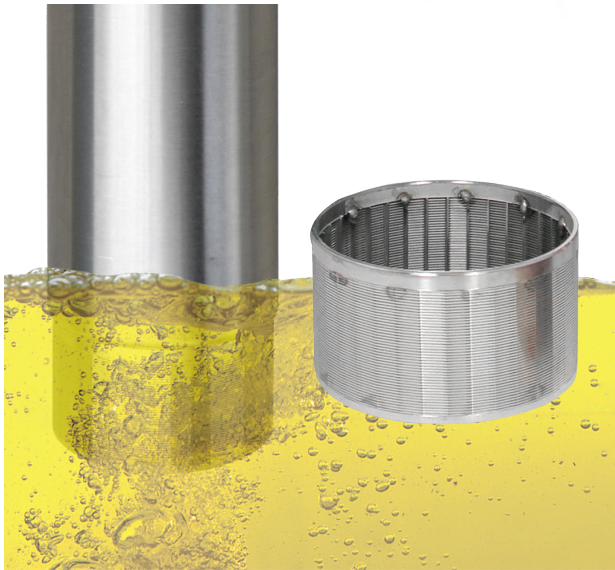


# BIOFUEL COMPATIBILITY

As the demand for biofuels continues to grow, FE PETRO® brand Alcohol-Gas (AG) optioned submersible turbine pumps are at the forefront of motor fuel compatibility. Service station customers demand it, make sure you can provide it.



## BIOFUEL APPROVED

FE PETRO® brand STPAG and IST models of STPs are currently the only STPs UL listed for use with gasoline up to 85% ethanol (E85) and diesel fuel with up to 20% biodiesel (B20) or 100% biodiesel according to UL79A and UL79B respectively.

## INTAKE FILTER SCREENS

As biofuel use continues to grow, so does the potential for increased debris inside the storage tank. To stop this debris from entering the pumping system, use an FE PETRO® brand Intake Filter Screen (IFS). When installed, an IFS adds only about 1" to the length of the PMA and provides filtration down to about the size of a grain of sand (0.009" openings).

# ADVANCED PROTECTION

Available as an option on Alcohol-Gasoline (AG) compatible STPs, Advanced Protection defends pumps from accelerated corrosion caused by the acetic byproduct of microbial activity. Building on the AG construction for biofuel compatibility, the Advanced Protection option includes additional upgraded materials for a greater level of protection. Choose this added level of protection for installations where additional corrosion protection is needed including Ultra Low Sulfur Diesel applications, aboveground storage tanks, marinas, and aviation applications.



## FACTORY INSTALLED

Advanced Protection is a factory installed option on STPAG and IST biofuel compatible models.

## PROTECTIVE MATERIALS

Specifically formulated powder-coated and E-coated finishes protect exterior cast surfaces from accelerated corrosion. Stainless steel fasteners, riser, variable length column pipe and coupler protect against corrosion and provide long service life.



## ADVANCED PROTECTION SUBMERSIBLE TURBINE PUMPS

Available as a factory installed option on STPAG and IST biofuel compatible submersible turbine pumps, Advanced Protection defends STPs from accelerated corrosion caused by the acetic byproduct of microbial activity.

### Highlights

- Powder-coated and E-coated finishes protect exterior cast surfaces from accelerated corrosion.
- Stainless steel fasteners, riser, variable length column pipe and coupler protect against corrosion and provide long service life.
- UL and cUL listed.

### Ordering Information

A typical turbine model designation has up to five components to define the pump being supplied as follows:

#### STP XXXXX Y-A-B

##### STP = Basic Model Designation (IST for variable speed models)

**XXXXX = Factory Installed Options** (Model designations may include one or more of the following characters in alphabetical order.)

AP = Advanced protection with coated exterior cast surfaces, stainless steel fasteners and piping, alcohol-gasoline compatible)

F = Floating suction adapter (1½" NPT female adapter)

H = High pressure deadhead output (150 and 200 models only)

K = Intake filter screen (IFS, factory installed to PMA)

M = MagShell™ (flow enhancing, expanded PMA shell)

R = Model R check valve (24 psi relief/22 psi reset for PLLD)\*

W = Model W check valve (16 psi relief/13 psi reset for PPM4000)\*

##### Y = Pump Motor Horsepower Rating

33 = 1/3 hp fixed speed

200 = 2 hp fixed speed

75 = ¾ hp fixed speed

VS2 = 2 hp variable speed\*\*

150 = 1½ hp fixed speed

VS4 = 4 hp variable speed\*\*\*

##### A = Model Length

VL1 = Variable length range #1

VL2 = Variable length range #2

VL3 = Variable length range #3

##### B = Riser Pipe Length

Riser pipe length is expressed as two numeric characters that indicate the total length of the riser in inches. Riser pipes are available from 7" to 60" in 1" increments (additional charge for risers 31" or longer).

Notes:

\*If not otherwise specified, all STP models are supplied with standard model check valve (40 psi relief /35 psi reset for MLD, TS-LS300, and TS-LS500).

\*\*Implied on IST models unless VS4 is specified.

\*\*\* IST models only.

(Advanced Protection STP shown with MLD+ and IFS, sold separately)

## Ordering Information continued

### Advanced Protection Submersible Turbine Pumps

Model	Description	Model Length Range*
ISTAPMVS4-VL1	4 hp AP variable speed with MagShell™	64"-92"
ISTAPMVS4-VL2	4 hp AP variable speed with MagShell™	95"-156"
ISTAPMVS4-VL3	4 hp AP variable speed with MagShell™	127"-218"
ISTAPM-1	2 hp AP variable speed with MagShell™	59"-87"
ISTAPM-2	2 hp AP variable speed with MagShell™	90"-151"
ISTAPM-3	2 hp AP variable speed with MagShell™	122"-213"
STPAPM200-VL1	2 hp AP fixed speed with MagShell™	63"-91"
STPAPM200-VL2	2 hp AP fixed speed with MagShell™	94"-154"
STPAPM200-VL3	2 hp AP fixed speed with MagShell™	126"-217"
STPAPHM200-VL1	2 hp AP high pressure fixed speed with MagShell™	63"-92"
STPAPHM200-VL2	2 hp AP high pressure fixed speed with MagShell™	94"-155"
STPAPHM200-VL3	2 hp AP high pressure fixed speed with MagShell™	126"-218"
STPAP150-VL1	1-1/2 hp AP fixed speed	60"-88"
STPAP150-VL2	1-1/2 hp AP fixed speed	91"-152"
STPAP150-VL3	1-1/2 hp AP fixed speed	123"-214"
STPAPH150-VL1	1-1/2 hp AP high pressure fixed speed	61"-89"
STPAPH150-VL2	1-1/2 hp AP high pressure fixed speed	92"-152"
STPAPH150-VL3	1-1/2 hp AP high pressure fixed speed	124"-215"
STPAP75-VL1	3/4 hp AP fixed speed	57"-86"
STPAP75-VL2	3/4 hp AP fixed speed	88"-149"
STPAP75-VL3	3/4 hp AP fixed speed	120"-212"

#### Notes:

- Remove "M" from model number for non-MagShell™ pump motor assembly (where applicable).
- STPAP/ISTAP models are listed for compatibility with fuel mixtures containing diesel fuel with up to 20% biodiesel, 100% biodiesel, up to 85% ethanol with gasoline, and 20% MTBE, 20% ETBE or 17% TAME with gasoline.
- All models are supplied with a standard check valve unless factory option "R" or "W" is specified.
- All above ISTAP models can only be powered by a MagVFC™. 4 hp models require three-phase incoming power supply, 2 hp models can be supplied with single- or three-phase incoming power.
- All above STPAP models require single-phase, 208-230 VAC, 60 Hz incoming power.
- 4" riser pipe, if supplied locally, must be 4½" OD by 3/16" WT tubing.
- For riser pipe lengths 31" to 60", adder charge applies.

\*Model length (A) defined as the dimension from the turbine manifold bottom to the pump motor inlet.

### Factory Installed Options

Specified in model number at time of STP order.

Model	Description
F	Floating suction adapter, 1½" NPT female, must be factory installed
K	IFS (intake filter screen) factory assembled to pump motor assembly
R	Model R check valve, factory installed, for Veeder-Root™ PLLD Line Leak
W	Model W check valve, factory installed, for Red Jacket PPM4000 Line Leak

## Ordering Information

### Field Installed Options

Model	Description
5874202800	MagVFC™, 2 hp or 4 hp variable frequency controller, one required per IST
400137908	Syphon check valve (when ordered with STP)
400818921	STP-CBS, single-phase control box with lockout switch, 110 Volt coil
402312921	STP-DHI-SCI, combo DHI with factory wired STP-SCI (when purchased with a 4" STP)*
402312921	STP-DHI-SCI, combo DHI with factory wired STP-SCI (when purchased without a 4" STP)
402313921	STP-DHI-CBS, combo DHI with factory wired STP-CBS
402459931	Model 65 psi check valve (for slave of manifolded STPs with Veeder-Root™ PLLD)
402507930	Secondary syphon kit (when two syphon primes are required for one STP)
5800100215	STP-SCI, single-phase smart controller (when purchased without a 4" STP)
5800100215	STP-SCI, single-phase smart controller (when purchased with a 4" STP)*
5800300100	STP-DHI, dispenser hook isolation for 110 Volt dispenser handle switches, up to eight each

\*When purchasing STP-SCI or STP-DHI-SCI in equal quantities of fixed speed 4" STPs, the STP-SCI or STP-DHI-SCI will be invoiced at special discount pricing.

# FE PETRO®

A Franklin Fueling Systems Brand

franklinfueling.com

3760 Marsh Rd. • Madison, WI 53718, USA

Tel: +1 608 838 8786 • Fax: +1 608 838 6433

Tel: USA & Canada +1 800 225 9787 • Tel: UK +44 (0)1473 243300

Tel: Mex 001 800 738 7610 • Tel: FR +33 (0)1 69 21 41 41 • Tel: CH +86 10 8565 4566

