

Model / Type	Description	E85 (UL Listed) FlexFuel upfit required	Biodiesel**
<b>Gilbarco® Encore® 700 S or S dispensers</b>			
MPDs	NA0 MPD Dispenser 1-Grade (alternative fuel)	x	x
MPDs	NA1 MPD Dispenser 2-Grade (alternative fuel, 1 or 2 grades)	x	x
MPDs	NA2 MPD Dispenser 3-Grade (alternative fuel, 1 or 2 grades)	x	x
MPDs	NA3 MPD Dispenser 4-Grade (alternative fuel, 1 or 2 grades)	x	x
Single-Hose MPD	NG0 Single-Hose + MPD Dispenser, 3-Grade (alternative fuel, 1 grade)	x	x
Single-Hose MPD	NG1 Single-Hose + MPD Dispenser, 4-Grade (alternative fuel, 1 grade)	x	x
X + O Blender	NN1 Blender Dispenser, 3 Grade (alternative fuel)	x	x
X + O Blender	NN2 Blender Dispenser, 4 Grade (alternative fuel)	x	x
X + O Blender	NN3 Blender Dispenser, 5 Grade (alternative fuel)	x	x
X + 1 Blender	NLO Blender Dispenser, 2 Grade (alternative fuel)	x	x
X + 1 Blender	NL1 Blender Dispenser, 3 Grade (alternative fuel)	x	x
X + 1 Blender	NL2 Blender Dispenser, 4 Grade (alternative fuel)	x	x
Single Hose 1 + 1	NL3 Blender Dispenser, Single Hose 3+1+1	x	x
Multi-Hose Blender + 1	NJ2 Multi-Hose Blender Dispenser +1, 4-Grade (Regular Unleaded, Premium Unleaded, Mid-level ethanol blend, E85). Each grade has its own hose, allowing maximum flexibility for the marketer	x	x
Multi-Hose Blender 3 + 2	NJ4 Blender Dispenser, Multi-Hose 3+2	x	x
<b>Gasboy® Commercial and Retail Dispensers</b>			
9853AX-D	Elec. Comm Single, Side Load Dispenser	x	x
9853AXTW1-D	Elec. Comm Twin - One Product, Side Load Dispenser	x	x
9853AXTW2-D	Elec. Comm Twin - Two Product, Side Load Dispenser	x	x
<b>Veeder-Root® Automatic Tank Gauges</b>			
Veeder-Root TLS-300C (848590-521)	ATG/TLS 1-2 UST configuration console with inventory monitoring and leak detection for non-retail applications	x	x
Veeder-Root TLS-350 Plus (848290-122)	ATG/TLS UST monitoring console with magnetorestrictive probe capability, CSLD, site fax option, integral printer	x	x
Veeder-Root® TLS-350R (848290-022)	ATG/TLS UST monitoring console with automatic inventory capability, BIR, CSLD, Accu-Chart tank calibration, integral printer	x	x
Gilbarco® EMC	ATG/TLS UST Environmental Management Console with automatic inventory capability, BIR, CSLD, integral printer	x	x
Red Jacket® Pro Max RJ PX-2	ATG/TLS UST console with integral printer, (2) two Transducers*, input/output pressurized electronic line leak interfaces, risk management software, sensor input interface, and (2) two standard length Mag probes (847391-xxx) with 4" floats (849600-004) and probe riser caps	x	x
Red Jacket® ProPlus PP2	ATG/TLS UST console with integral printer, eight sensor input, (2) two standard length Mag probes (847391-xxx) with 4" floats (849600-004) and probe riser caps	x	x
<b>Veeder-Root® Tank Probes and Sensors</b>			
Mag Plus Stainless Steel Probe (846391-4xx to 6xx)	Probe Stainless steel alternative fuel probe (consult factory for Bio-diesel float kits)	x	x
Mag Plus Probe (847390-xxx)	Probe Regular magnetorestrictive probe (consult factory for Bio-diesel float kits)		x
794380-323	Sensor Stainless steel position sensitive pan/sump sensor	x	x
794380-344	Sensor Microsensor	x	x
794380-345	Sensor Stainless steel interstitial solid state sensor for fiberglass tanks	x	x
794380-430	Sensor Stainless steel interstitial sensor for steel tanks	x	x
794390-333	Sensor Position sensitive interstitial sensor for steel tanks	x	x
<b>Red Jacket® Submersible Turbine Pumps AG</b>			
AGP75S1 RJ2	STP 102"-162", PN# 410140-019 for use in gasoline, diesel, ethanol, methanol, or gasoline-alcohol concentrations of 80% gasoline and 20% TAME, ETBE, or MTBE	x	x
AGP150S1 RJ2	STP 104.5"-165", PN# 410141-020 for use in gasoline, diesel, ethanol, methanol, or gasoline-alcohol concentrations of 80% gasoline and 20% TAME, ETBE, or MTBE	x	x
AGP200S1-3 RJ2	STP 108.5"-168.5", PN# 410142-020 for use in gasoline, diesel, ethanol, methanol, or gasoline-alcohol concentrations of 80% gasoline and 20% TAME, ETBE, or MTBE	x	x

Hanging hardware for flexible fuel dispensers must also be compatible with the alternative fuels that will be used.

\*\*Biodiesel compatible to B20 with standard hydraulics - pending UL listing up to 20% biodiesel; \*\*\*Biodiesel about 21% requires flexfuel upfit - pending UL listing



Dispenses flex fuels.

Fuels your brand.

Encore® NJ4



Encore® NJ3

## Encore® Flexible Fuel Dispensers

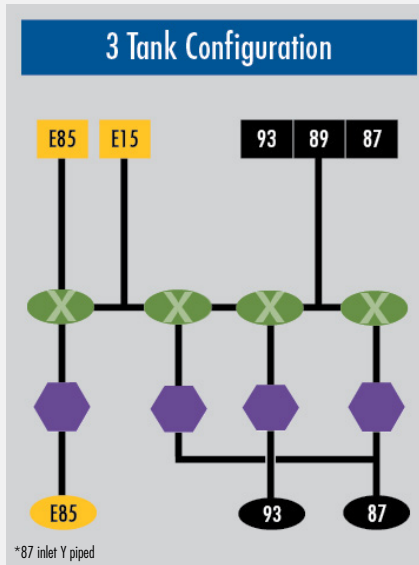
Your customers are demanding more and more alternative fuel options. Encore® Flexible Fuel Dispensers help broaden your fuel offering while keeping the fueling experience simple — and safe.

With the industry's broadest set of flexible fuel options, Encore offers up to five product selections from one fueling position. It's a smart investment that lets you maximize branding and sales opportunities, while keeping the number of tanks needed to a minimum. All with the unmatched durability and reliability you expect from the industry leader in flexible fuels.

Our newest model, NJ4, is a Multi-Hose Hybrid Blender, allowing you to offer three grades of blended gasoline, as well as two additional blended grades of alternative fuel that blend through their own individual hoses. Combined with clear signage, this feature prevents mis-fueling at the pump.

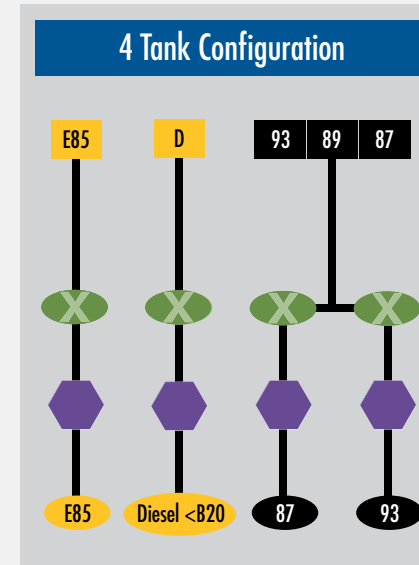
The Encore Flexible Fuel dispenser comes with all the same selling tools and value-added options as a traditional Encore unit:

- > Applause™ TV or Applause Media System on 10.4" color screen
- > Highly secure and powerful CRIND® electronics
- > 2 year parts and labor warranty



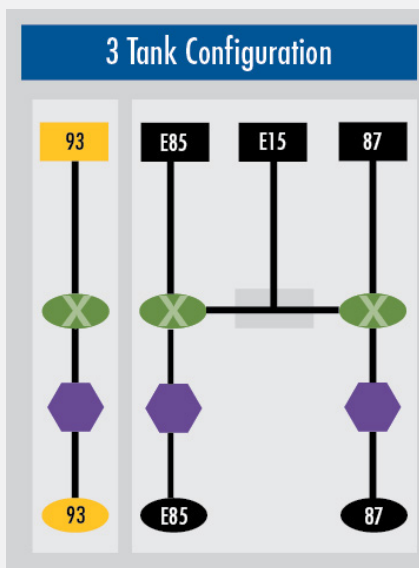
### Model NJ4 - Encore 3-2 Hose Dispenser

With the dual blend configuration of the NJ4, you can offer up to five products from only 3 hoses, (e.g. E85, Mid-level Ethanol (E15), Unleaded, Mid Unleaded, Premium.) The ability to offer E15 through a separate hose with the NJ4 reduces the risk of mis-fueling.



### Model NL3 - Encore 3-1-1 Hose Dispenser

The NL3 is the only dispenser available that can offer standard unleaded grades, Diesel and E85 from the same fueling position. From its three hoses you can offer up to five products, maximizing your fuel marketing.



### Model NJ2 - Encore 4 Hose Dispenser

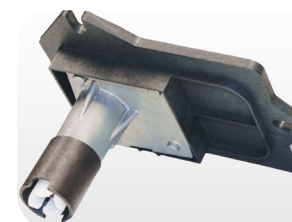
There are four hoses on the NJ2, one for each product (e.g. Unleaded, Premium, E85, E15). Combined with clear signage, the NJ2 minimizes the risk of mis-fueling.

## Encore® Dispenser Options



### Forecourt Merchandising

Applause TV offers you a full-color, professionally managed in-dispenser entertainment and advertising system with content managed by VNET Media, the leading fuel television network. It's a hassle-free way to provide your customers with a memorable fueling experience that drives them into your store and builds loyalty. And it's available to any retailer in the US without restrictions or qualifications.



### Enhanced Security

The **Encrypted Pulser** has several features that protect a key attack point for thieves that steal fuel at the dispenser. Through encrypted pump/pulser communication, lift off detection, a unique pulser ID, and a hardened enclosure, the Encrypted Pulser gives you an extra measure of protection and peace of mind.

Configuration Key  
 Valve Meter Hoses Underground Storage Tanks