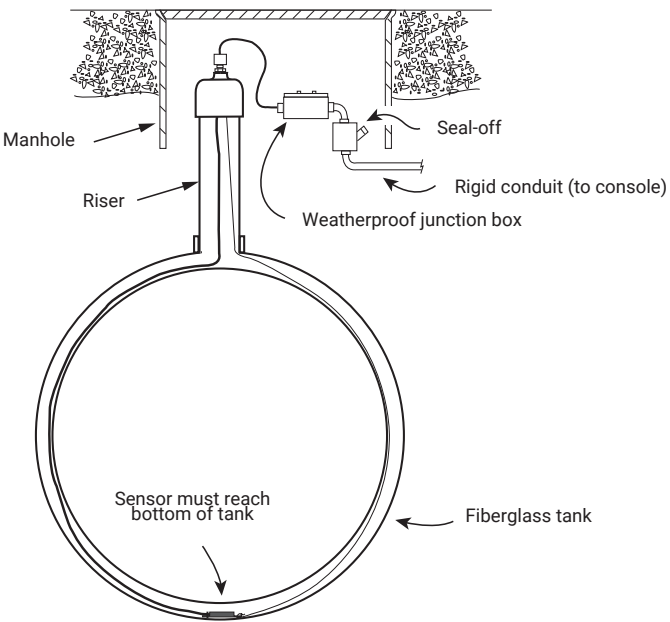
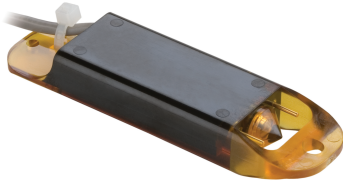


<b>Sensor Description</b>	<b>Solid-State Alternative Ethanol Fluid Interstitial Sensor for Double-Wall Fiberglass Tanks</b>		The Interstitial Sensor for Double-Wall Fiberglass Tanks with high alcohol product uses solid-state liquid level sensing technology to detect liquid in the interstitial space of the tank.					
<b>Part Number</b>	<b>794380-345</b>							
<b>Category</b>	<input type="checkbox"/> Discriminating <input checked="" type="checkbox"/> Non-Discriminating <input type="checkbox"/> Position Sensitive		<input type="checkbox"/> Level Sensing <input type="checkbox"/> Static Testing <input type="checkbox"/> Hydrostatic					
<b>Fuel Compatibility</b>	<input checked="" type="checkbox"/> Gas <input checked="" type="checkbox"/> Diesel <input checked="" type="checkbox"/> Kerosene <input checked="" type="checkbox"/> Jet Fuel <input checked="" type="checkbox"/> Aviation Gas		<input checked="" type="checkbox"/> E-15 <input checked="" type="checkbox"/> E-85 <input checked="" type="checkbox"/> E-100 <input checked="" type="checkbox"/> Bio-Diesel 20 <input checked="" type="checkbox"/> Bio-Diesel 100				<input checked="" type="checkbox"/> Green Diesel <input checked="" type="checkbox"/> DEF <input checked="" type="checkbox"/> Waste Oil <input checked="" type="checkbox"/> Motor Oil	
<b>Console Compatibility (*International Only<sup>1</sup>)</b>	<b>Recommended Min. Console Software</b>	<b>Sensor Interface Modules</b>						
		<b>Module Part #</b>	<b>Module Description</b>	<b># of Modules per Console</b>	<b># of Sensor Inputs per Module</b>	<b>Availability</b>		
TLS-450PLUS (8600 Series)	6A or Higher	332812-001	Universal Sensor Module (USM)	Up to 4 - TLS-4XX Up to 8 - TLS-4XX w/ opt. TLS-XB	16	Sold Separately		
TLS-450	4A or Higher							
TLS4 (8601 Series) <sup>1</sup>	6A or Higher	330020-750	Universal Sensor Input Out-put Module (USIOM-AC)	1	12	Included		
TLS4i (8601 Series)								
TLS4B (8601 Series) <sup>1</sup>								
TLS4c (8601 Series)								
TLS-350/R/PLUS	124/324 or Higher	329956-001	Type A Sensor Interface Module	Up to 8	8	Sold Separately		
TLS-350J	N/A							
TLS-300i								
TLS-300C								
<b>Alarm Notification</b>	Normal	Sensor in Normal State - No liquid detected						
	Fuel Alarm	Liquid detected						
	Sensor Out	Sensor not communicating to ATG/Console						
<b>Specifications</b>			<b>Example Installation</b>					
Operating Principle	Optical - looking at phase changes in the light beams by causing them to interact or interfere with one another							
Product Activation Height	Fuel or Water <0.2" (0.5cm); E85 <0.4" (1cm)							
Operating Temperature	-40 to +122°F (-40 to +50°C)							
Dimensions	4.3" (11cm) length, 1.5" (3.8cm) width, 0.5" (1.3cm) thick							
Miscellaneous/Notes	Standard Cable 25ft (7.6m) fits 4 to 10ft (1.2 to 3m) I.D. fiberglass tanks							
Third Party Evaluation Links	<a href="#">TLS-350/TLS-450 Series Consoles</a> <a href="#">TLS4 (8601 Series) Consoles</a>							
Product Link	<a href="#">Solid-State Alternative Ethanol Fluid Interstitial Sensor</a>							
Warranty with System	1 Yr Parts & Labor							
Warranty (When purchased separately)	1 Yr Parts Only							
<b>Where Used (Typical)</b>	<input checked="" type="checkbox"/> Convault Tank <input checked="" type="checkbox"/> Annular Space <input type="checkbox"/> Monitoring Well <input type="checkbox"/> Oil/Water Separator Tank							
	<input type="checkbox"/> Dispenser Pan <input type="checkbox"/> Spill Containment <input type="checkbox"/> STP Sump							



# Notice

---

Veeder-Root makes no warranty of any kind with regard to this publication, including, but not limited to, the implied warranties of merchantability and fitness for a particular purpose.

**Veeder-Root shall not be liable for errors contained herein or for incidental or consequential damages in connection with the furnishing, performance, or use of this publication.**

Veeder-Root reserves the right to change system options or features, or the information contained in this publication.

This publication contains proprietary information which is protected by copyright. All rights reserved. No part of this publication may be photocopied, reproduced, or translated to another language without the prior written consent of Veeder-Root.

## **Example Illustrations**

Illustrations used in this guide for example sensor installations may contain components that are customer supplied and not included with the sensor. Please check with your Veeder-Root Distributor for recommended installation accessories.

## **Third Party Evaluations**

Third party evaluations of the Veeder-Root sensors contained in this application guide can be found under the Veeder-Root vendor name on the National Work Group on Leak Detection Evaluations (NWGLDE) website:

<http://www.nwglde.org>